

### GARAGE DOOR HARDWARE COMPONENTS\* LIST FOR RESIDENTIAL DOORS

\* The pictures of hardware components below are for illustrative purposes only and do not represent the content of a particular door model. (Not real size).

#### INDEX

3-Hole Plate .....	4
400-8 Drums .....	7
Bottom Brackets .....	5
End Bearing Support Brackets .....	7
Frame Bolt .....	2
Galvanized Perforated Angle .....	6
Hex Bolts .....	2
Hinges .....	5
Hollow Steel Tube Shaft .....	7
Lag Screws .....	3
Lifting Cables .....	4
Lifting Handles .....	8
Locks .....	9
Nuts .....	2
Pulley and support .....	4
Reinforced Top Moulding .....	8
Rollers .....	6
Security Cables .....	7
S Hook .....	3
Self-Drilling Screws .....	3
Springs .....	7
Square Head Screw .....	3
Strut .....	4
Top Brackets .....	4
Top Weatherstripping .....	7
Top Weatherstripping with retainer .....	8
Track Bolt .....	2
Tracks .....	6
Weatherstripping .....	8



Phone. **1 800 748-3317**  
Fax. **1 877 744-3443**  
[info@garex.ca](mailto:info@garex.ca)  
[www.garexdoors.com](http://www.garexdoors.com)

**QUEBEC**  
610, Principale St,  
Val-Alain (QC) Canada  
G0S 3H0

**MONTREAL**  
10020, Mirabeau St,  
Anjou (QC) Canada  
H1J 1T6

**NEW BRUNSWICK**  
62, Saint-André Rd,  
Saint-André (NB) Canada  
E3Y 3S9

### EHSZ14



#### **1/16 Nut (1/4" - 20)**

These nuts and the track bolts are used to connect together the horizontal and vertical tracks, and the radius.

### ESZ516



#### **1/2 Nut (5/16" - 18)**

These nuts and frame bolts are used for installing vertical and horizontal tracks. These nuts can also be used with 1/2 hex bolt for installing end brackets.

### ESZ38



#### **3/8 Nut (3/8" - 16)**

These nuts and the 3/16 hex bolts are used to assemble the pulleys and their supports when installing extension springs.

### BP14075



#### **Track Bolt (1/4" x 20 x 3/4")**

These bolts are used to connect together the horizontal and vertical tracks, and the radius.

### BC516075



#### **Frame Bolt (5/16" x 18 x 3/4")**

These bolts and the 1/2 nuts are used to connect the horizontal and vertical tracks as well as the horizontal track bracing.

### BC516075



#### **1/2 Hex Bolts (5/16" x 18 x 3/4")**

These bolts and the 1/2 nuts are used to install the horizontal track bracings. They are also used to connect the horizontal track bracing to the horizontal track.

### BH3815



#### **3/8 Hex Bolt (3/8" x 16 x 1 1/2")**

When installing the extension springs, these bolts along with the 3/16 nuts are used to install the pulleys.

### VBH1414114716Z



#### **1/16" Lag Screw (1/4" x 14 x 1 1/4")**

These screws are used to install the hinges at the ends of the panels, the side lock, and the top and bottom brackets.

### VBH51669112716Z



#### **1/16" Lag Screw (1/16" x 1 x 1 1/2")**

These screws are used to secure vertical tracks and brackets that mount to the wall.

### VAT314201716



#### **1/16" Self-Drilling Screw (3/4" x 20 x 1/16")**

These screws are used to install the center hinges. The location of the hinges is identified by carefully placed punch holes where the steel plates are located. These screws are also used for installing struts (when necessary).

### VAT101RPCZ



#### **#2 Square Head Self-Drilling Screw (10 x 1")**

These screws are used to install the inner lifting handle.

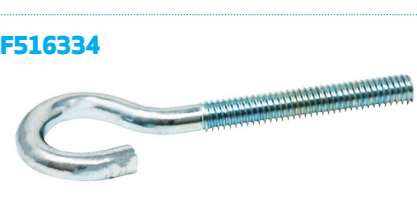
### VB8118RPCZ



#### **#2 Square Head Screw (8 x 1 1/8")**

These screws are used to install the weatherstripping on the wooden frame to prevent air leaks.

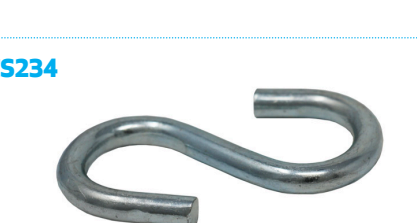
### CF516334



#### **5/16" Threaded Open Eye Bolt**

When installing the extension springs, this hook is used to hang the spring on the horizontal track bracing.

### CS234



#### **S-Hook**

When installing the extension springs, this s-hook allows the cables installed on the 3-hole plate to be hooked on the front horizontal angle.

### FP3



#### 3" Pulley

When installing the extension springs, the pulleys are used to pass cables that counterbalance the weight of the door.

### FP4



#### Pulleys Support

When installing the extension springs, this bracket installed on the pulley allows the spring to be attached.

### ZPL3T



#### 3-Hole Plate

When installing the extension springs, this plate is used to connect the cable and s-hook.

It is possible to lengthen or shorten the cable length to adjust the tension in the mechanism.

### 7' DOOR CAA7718102

### 8' DOOR CAA7718114



#### Lifting Cables /Cable Clamp / Stop Sleeve

The lifting cables link the bottom support and the drum, and lift the door when it is opened. At one end of the cables, there are cable clamps which are used to form a loop that will be hooked onto the bottom bracket.

The other end has are stopping sleeves to easily attach the cable to the 400-8 drum.

### RESIDENTIAL SHRA

### COMMERCIAL SHCA



#### Top Brackets

The top brackets are installed on the top panel (last panel). These brackets are adjustable to optimize the opening of the door.

### SHLHRL



#### LHR Top Brackets

When installing in a limited space, these top brackets are installed on the top panel (last panel).

### BR + DOOR WIDTH



#### Strut

The struts are installed on the interior side of the door in order to control the deflection of the door.

### # 1 HINGE P01G18

### # 2 HINGE P02G18

### # 3 HINGES P03G18



#### 18 Ga. - Hinge

These hinges are for economical residential use.  
This gauge is available for hinges #1, 2 and 3.

### # 1 HINGE P01G14



#### 14 Ga. - Hinge #1

This hinge is located on the outer edges of the first panel (**bottom panel**) of the door and attaches the first and second panels together (bottom to top).

It is also used down the **center** of the door to connect all the door panels together.

### # 2 HINGES P02G14



#### 14 Ga. - Hinge #2

This hinge is located on the outer edges of the **barlock panel** (panel # 2). It connects the second and third panels together (bottom to top).

The roller will be inserted into the cylinder furthest from the door to ensure optimal operation.

### # 3 HINGES P03G14



#### 14 Ga. - Hinge #3

This hinge is located on the outer edges of the **inter panel** (panel # 3) and it connects the third and fourth panels of the door (bottom to top).

The roller will be inserted into the cylinder furthest from the door to ensure optimal operation.

### RESIDENTIAL SBRSL

### COMMERCIAL SBC

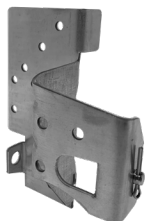


#### Bottom Brackets

The bottom brackets are installed on the outer edges of the bottom of the door. They are used to tie lifting cables.

### RESIDENTIAL SBRLHR

### COMMERCIAL SBCLHR



#### LHR Bottom Brackets

This bottom bracket is designed specifically for situations where there is a lack of space above the door that requires the use of hardware adapted to this situation.

### RNN2T4



#### Black Nylon Roller

These rollers without ball bearings are inserted into the screwed hinges at the outer edges of the panels and roll in the tracks when opened and closing the door.

### RNB2T4



#### White Nylon Roller

These rollers with ball bearings are inserted into the screwed hinges at the outer edges of the panels and roll in the tracks when the door is opened and closed.



#### Exterior Clip

These angles are welded to the vertical tracks and are used to secure the tracks to the wall on a wooden frame.



#### Interior Clip

These angles are welded to the vertical tracks and are used to secure the tracks to the wall on a steel frame.



#### Exterior Continuous Angles

These angles are used to fix the vertical tracks to the wall on a wooden frame and strengthen the installation.



#### Interior Continuous Angles

These angles are used to fix the vertical track to the wall on a steel frame and strengthen the installation.

### 16 GAUGE AGP1610

### 14 GAUGE AGP1410

### 13 GAUGE AGP1310



#### Perforated Angle Struts

These perforated angles are used to make the horizontal track bracings that secures the tracks to the ceiling as well as electrical operators.

**RESIDENTIAL**  
**SB258100D & G**



### End Bearing Plate

These bearing plates are installed with screws on the horizontal tracks as well as on the wall and are used to insert the steel tube or shaft inside the ball bearing.

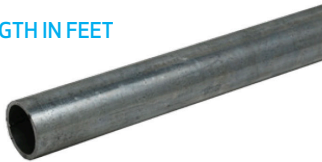
**RESIDENTIAL**  
**T4008100D & G**



### 400-8 Drums

The drums are used to wind and unwind the cables that lift and lower the door.

**TVZXX**  
(XX TUBE LENGTH IN FEET  
REQUIRED)



### Hollow Steel Tube Shaft

This shaft is used to transfer energy from the spring (s) to the drums, which allows the door to move. The torsion spring will be installed and locked on the steel tube.



### Torsion Spring

The torsion spring assembly mounted on a steel tube produces energy that counterbalances the weight of the door, giving enough tension to the drums to pull the cables that go up the door through the bottom bracket. MUCH CARE SHOULD BE TAKEN WHEN WINDING SPRINGS.



### Extension Spring

Extension springs are located on either side of the horizontal tracks. They pull the cables through the bottom brackets and lift the door. The cables pass through a pulley before going to the supports.

**CAA77332120**



### Security Cables

These cables are attached by their eyelet to the s-hook to pass inside the extension spring. The other end is attached to the inside of the rear support. These cables have the function of holding the pieces of the extension spring if it should break.

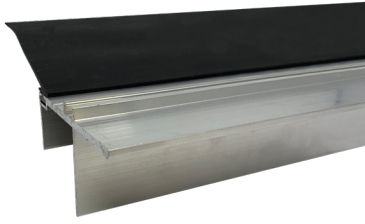
**MNPVCXX**  
(XX AVAILABLE  
IN 9' AND 12'  
LENGTH)



### Top Weatherstripping with PVC Retainer

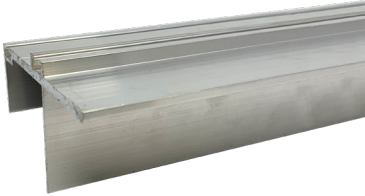
The top weatherstripping is installed on rigid PVC and is nailed above the top panel.





### Reinforced Top Moulding with Weatherstripping

The top weatherstripping with retainer is installed at the top of the door and makes the seal between the wall and the door to ensure airtightness.



### Reinforced Top Moulding

Aluminum reinforced moulding that serves to reinforce the top section of the door and is often used in cases where windows are installed in the top section. In addition, it is possible to insert a weatherstripping.



### PVC Weatherstripping

Peripheral weatherstripping installed on the wooden frames frame and prevents air leaks air infiltration between the door and the frame.



### Aluminum and Elastomer TPE Hybrid Weatherstripping

Peripheral weatherstripping installed on wooden frames and prevents air leaks between the door and the frame.



### Commercial Weatherstripping

Peripheral commercial weatherstripping is installed on wood or steel frames. It prevents air leaks between the door and the frame. Sometimes it is used in residential type installations.

ZPGI



### INTERIOR PVC Lifting Handle

Lifting handles are installed on the bottom panel and / or barlock and used to open and close the door when it is not motorized.

ZPGE

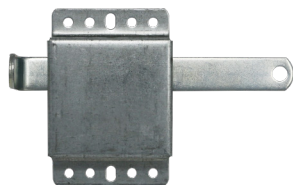


### EXTERIOR PVC Lifting Handle (optional)

Lifting handles are installed on the bottom panel and / or barlock and used to open and close the door when it is not motorized.



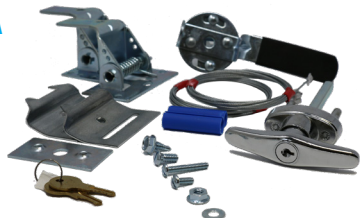
2"  
BC2FV  
3"  
BC3



### Side Lock

The side lock is installed on the side of the door. The rod bar slides in a hole on the track. You can also insert a padlock for more security.

BCA



### Cable Lock

The cable lock allows the user to unlock the door from the outside with a central handle as well as a key lock. The handle and the side locks are connected by a steel cable.



### Rod Lock

The rod lock allows the user to unlock the door from the outside with a central handle and as a key lock. The handle and the side locks are connected by a steel rod.